

Registration & Accreditation

Tuition includes all educational sessions, course syllabus, and refreshments the day of the course. You will receive written confirmation of your registration. To receive Category 1 credit, clinicians are required to attest to how many hours they were actually present at the given activity by completing a Verification of Hours form provided by the CME office. Failure to return this form will result in denial of credit for that activity.

Group Health Cooperative is accredited by the Washington State Medical Association CME Accreditation Committee to sponsor continuing medical education activities for physicians. Group Health Cooperative designates this educational activity for a maximum of **7.25 hours in Category 1** to satisfy the re-licensure requirements of the Washington State Medical Quality Assurance Commission. Group Health Cooperative designates this educational activity for a maximum of **7.25 AMA PRA Category 1 Credit(s)**[™]. Physicians should only claim credit commensurate with the extent of their participation in the activity.

Group Health Cooperative requires that faculty participating in a GHC CME activity disclose to the audience any relationship with a commercial interest that might pose a potential, apparent, or real conflict of interest with regard to that faculty member's contribution to the program.

Spine Update for Primary Care

Thursday, Feb. 11, 2010

Cedarbrook Conference Center, SeaTac, Wash.

Tuition

- Medical Staff: \$175 Resident: \$125
 Locum Tenens, ARNPs, Nursing, Others: \$150

Name _____ Title _____

Daytime Phone _____ Mailstop _____

E-mail _____

Credit Card Billing Address Required:

Address _____

City/State/Zip _____

Payment Method

- Check enclosed VISA Mastercard

Name as it appears on card _____

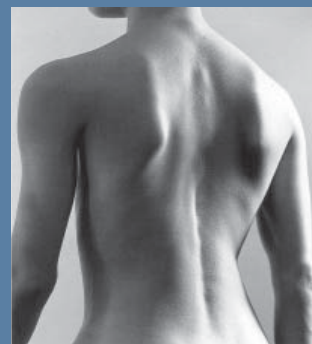
Card Number _____ Exp. _____

Please make check payable to

GHC CME and mail to:
Office of CME
201 16th Ave. E, CWB-3
Seattle, WA 98112

For more information contact:

John Graham
Phone: 206-326-4551
Fax: 206-877-0714
E-mail: graham.john@ghc.org



Spine Update for Primary Care

Thursday, Feb. 11, 2010
Cedarbrook Conference Center
SeaTac, Wash.

About the Course

This course is designed to address the wide range of clinical conditions associated with the care of patients with spinal conditions. It explores the aging spine, low back pain, new technology and other topics focused on common management issues that clinicians encounter. Lecture format and case presentations will provide attendees with take-home strategies for the improved evaluation and treatment of patients with these conditions.

Course Objectives

At the end of this educational program, participants will be able to:

- Apply new treatment practices for acute radiculopathy.
- Assess spine disease affecting the elderly and explain surgical and nonsurgical treatment options.
- Identify when it is appropriate to order high-end images for spinal conditions.
- Summarize current technologies that are being utilized for disk replacement.
- Describe the role of electrodiagnostic testing for spine care.
- Explain the impact of spinal deformity in patients of all ages and discuss treatment options.
- Outline treatment options for low back pain
- Recognize when it is appropriate to refer patients to Neurosurgery.
- Discuss a variety of spinal topics that are commonly seen in everyday primary care practice.

Faculty

Arne Andersen, MD

Neurosurgery, Capitol Hill Specialty Services
Group Health Spine Clinic
Group Health Permanente

Randi Beck, MD

Physical Medicine & Rehabilitation, Capitol Hill Specialty Services
Group Health Permanente

Ming Hong, MD

Neurology, Bellevue Medical Center
Group Health Permanente

Chris Killien, MD

Radiology, Capitol Hill Specialty Services
Group Health Permanente

Kyle Kim, MD, PhD

Service Line Chief, Neurosurgery, Capitol Hill Specialty Services
Group Health Permanente

Chong Lee, MD, PhD

Neurosurgery, Capitol Hill Specialty Services
Group Health Permanente

J.C. Leveque, MD

Neurosurgery, Capitol Hill Specialty Services
Group Health Permanente

Asher Nov, MD

Radiology, Capitol Hill Specialty Services
Group Health Permanente

Rajiv Sethi, MD

Orthopaedic Spinal Surgery
Deformity and Complex Reconstruction
Neurosurgery, Capitol Hill Specialty Services
Group Health Permanente

James Wang, MD

Neurosurgery, Capitol Hill Specialty Services
Group Health Permanente

Location

Cedarbrook Conference Center
18525 36th Ave. S • SeaTac, WA 98188
Phone: 206-901-9268

Driving Directions and Map:

<http://www.cedarbrookcenter.com/findus.html>

Agenda

a.m.

7:30 – 8:00

Registration and Refreshments

8:00 – 8:15

Introductions: Scope of Problem – Kyle Kim, MD, PhD

8:15 – 9:00

Treatment of Acute Radiculopathy – James Wang, MD

9:00 – 9:45

The Aging Spine – J.C. Leveque, MD

9:45 – 10:00

Break

10:00 – 10:45

High-end Imaging: When and What Pictures to Take of the Spine
– Arne Andersen, MD; Asher Nov, MD; Chris Killien, MD

10:45 – 11:30

New Technology: Disk Replacement – Chong Lee, MD, PhD

11:30 – 12:15

Role of Electrodiagnostic Testing in Spinal Care – Ming Hong, MD

p.m.

12:15 – 1:15

Lunch

1:15 – 2:15

Spinal Deformity: Children to the Elderly – Rajiv Sethi, MD

2:15 – 3:15

Low Back Pain – Randi Beck, MD

3:15 – 3:30

Break

3:30 – 4:00

Spine Care at Group Health: How to Refer Patients to Neurosurgery
– Kyle Kim, MD, PhD

4:00 – 5:00

Easy Answers to Case Based Issues – Chong Lee, MD, PhD; J.C. Leveque, MD;
Rajiv Sethi, MD; James Wang, MD

5:00

Evaluation & Adjournment